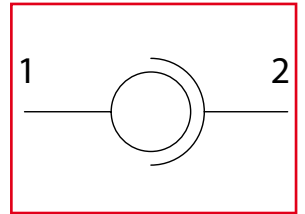




GGIL

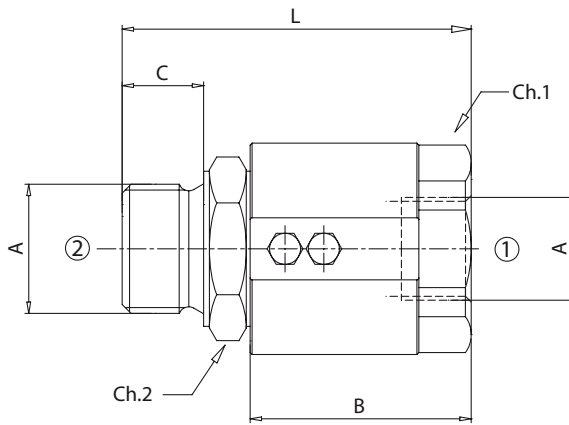
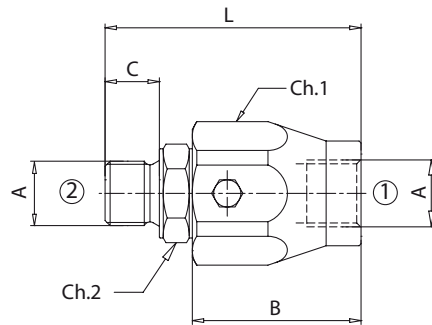
Giunti girevoli in linea
In line rotating coupling



LEHENGOMAK, S. A.



Dati tecnici Technical data	
Viscosità fluido Fluid viscosity	10-500 mm ² /s 45 to 2000 ssu (6 to 420 cSt)
Classe di contaminazione Filtration	ISO code 16/13 SAE class 4 or better
Temperatura fluido Fluid temperature	-20°C +80°C -4°F +176°F
Temperatura ambiente Ambient temperature	-20°C +50°C -4°F +122°F



mm
(Inches)

Codice ordinazione Ordering code	
GGIL - X	
X	Dimensione / Size
140	BSPP 1/4
380	BSPP 3/8
120	BSPP 1/2
340	BSPP 3/4
100	BSPP 1

Caratteristiche tecniche
Technical performances

Codice Code	A	Portata Max Max flow l/min - USgpm	Pressione Max Max pressure bar/PSI	Pressione max in rotazione Max rotation pressure bar/PSI	Velocità max di rotazione Max rotation speed rev/min	B	C	Ch.1	Ch.2	L	Peso approssimativo Approx weight Kg / lb
GGIL140	BSPP 1/4	25 (6.5)	400 (5800)	200 (2900)	212	42 (1.65)	11 (0.43)	30 (1.18)	19 (0.75)	61 (2.40)	0,21 (0.46)
GGIL380	BSPP 3/8	35 (9)			173	44 (1.73)	14 (0.55)	34 (1.34)	24 (0.95)	66 (2.60)	0,27 (0.60)
GGIL120	BSPP 1/2	60 (15)	300 (4000)	150 (2200)	160	47 (1.85)	15 (0.59)	36 (1.42)	27 (1.06)	71 (2.79)	0,34 (0.75)
GGIL340	BSPP 3/4	100 (26)			120	50 (1.97)	19 (0.75)	45 (1.77)	34 (1.34)	80 (3.15)	0,55 (1.2)
GGIL100	BSPP 1	180 (47)			100	57 (2.24)	21 (0.82)	50 (1.97)	41 (1.61)	90 (3.54)	0,91 (2)



LEHENGOMAK, S. A.